



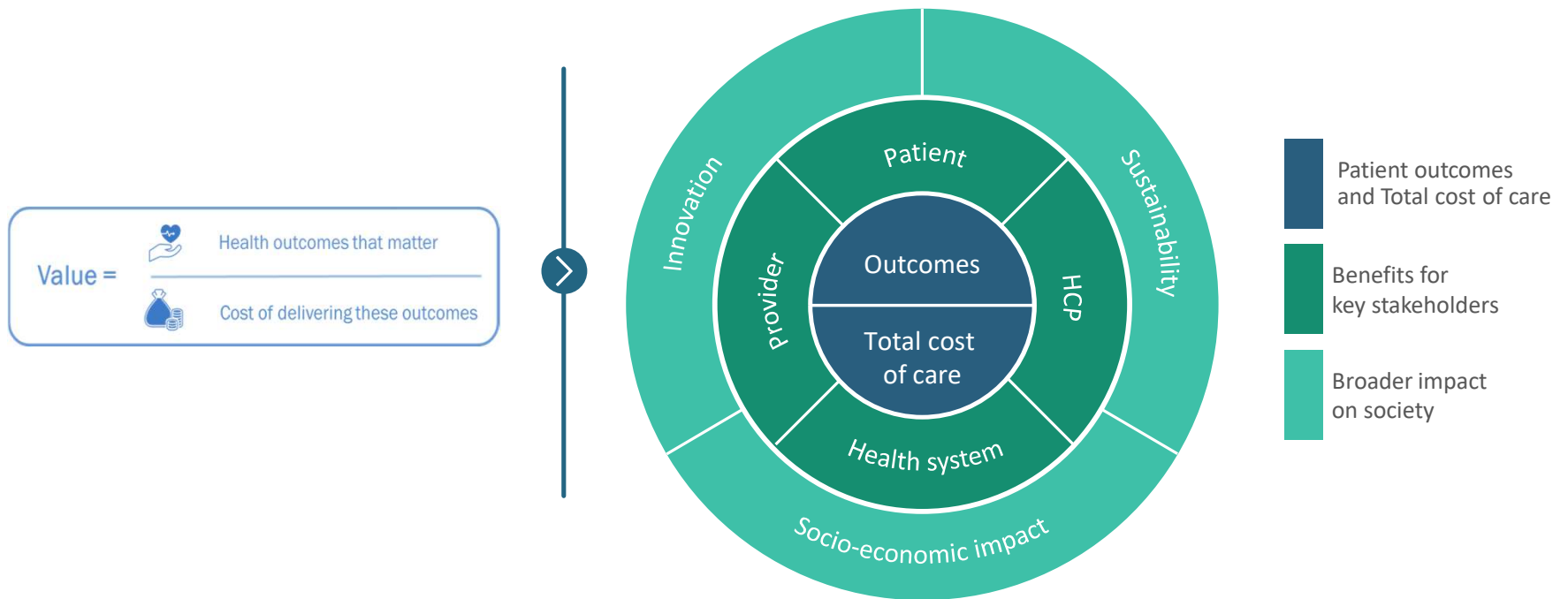
# Value-Based Procurement Framework



May 2023

# Value-Based Procurement framework

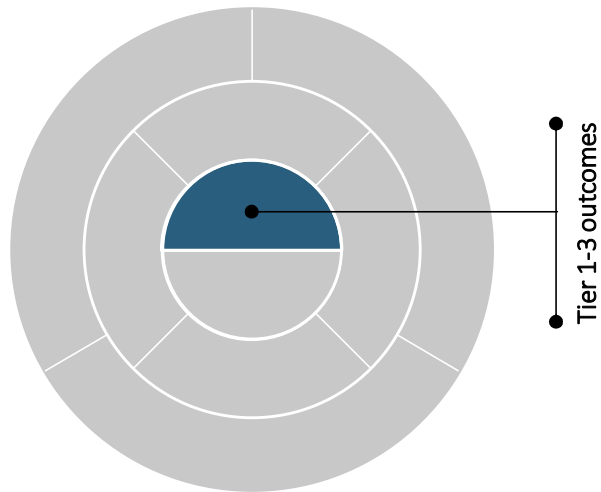
- define the impact on outcomes to make



## Disclaimer

The criteria listed in this document provided herein are non-exhaustive and are solely intended as examples for users, including but not limited to buyers and suppliers. These criteria do not encompass all possible factors that may be considered in evaluating awards or decisions, and their inclusion does not guarantee any specific outcome or result. The information provided should not be construed as legal, financial, or professional advice

# Core layer - Patient outcome



## Tier 1 Outcomes

- **Patient survival rate**
  - Mortality rate
- **Degree of health achieved**
  - Quality of life (psychical, emotional and social)
  - Functionality to perform activities/maintain independence
  - Morbidity incidence or severity of complications

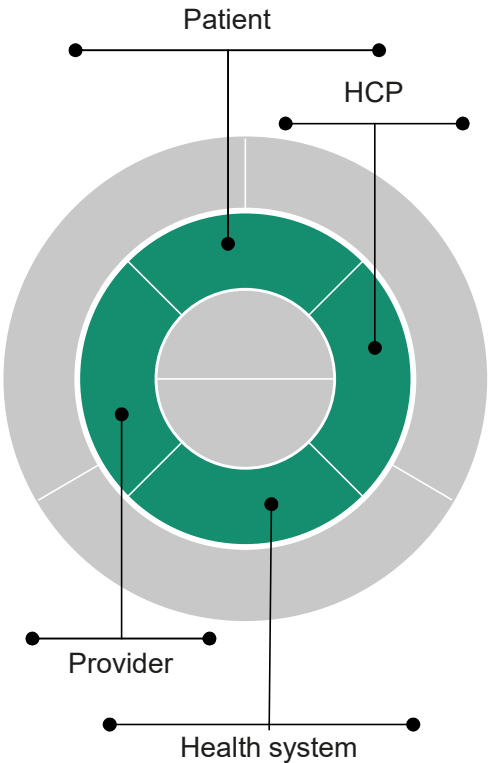
## Tier 2 Outcomes

- **Time to recovery and return to normal activities:**
  - Early and/or speed of diagnosis
  - Cycle times
  - Recovery- and/or rehabilitation time after surgery
  - Hospital length of stay
- **Disutility of the care or treatment process:**
  - Treatment complications
  - Wound infections
  - Hospital-associated infections

## Tier 3 Outcomes

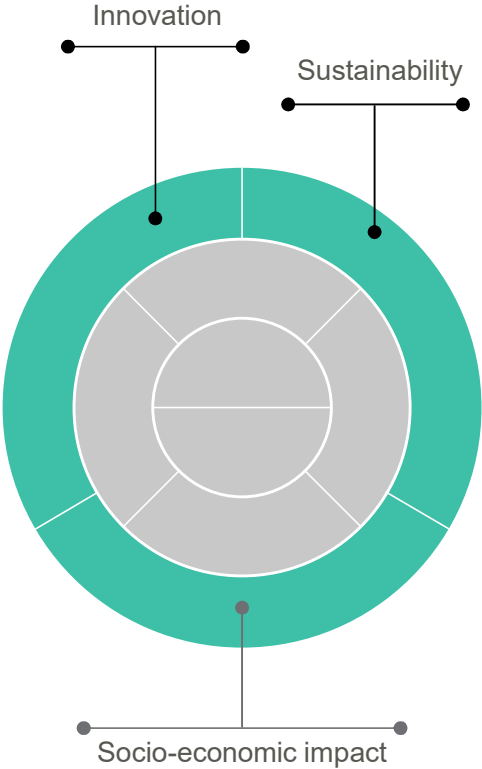
- **Sustained health/recovery and recurrences:**
  - Re-surgery rates
  - In-house re-consultations
  - Re-admissions
- **Long-term consequences of treatment**
  - Treatment side-effects
  - Revision surgery

# 2nd Layer - Benefits for key stakeholders



Category	Criteria
<b>Secondary patient benefits</b>	<ul style="list-style-type: none"> <li>Patient comfort and pain</li> <li>Patient flexibility and mobility</li> <li>Patient satisfaction</li> </ul>
<b>HCP benefits</b>	<ul style="list-style-type: none"> <li>Safety and occupational risk</li> <li>Appealing to use</li> <li>Ease-of-use (handling / functionality)</li> <li>Training and education</li> </ul>
<b>Provider benefits</b>	<ul style="list-style-type: none"> <li>Maintainability, warranty and technical service support</li> <li>Improving efficiency along patient pathway</li> <li>Staff satisfaction</li> <li>Workload reduction</li> <li>Strategic fit and support of strategy</li> </ul>
<b>Health system benefits</b>	<ul style="list-style-type: none"> <li>(Re-) hospitalization / Healthcare utilization</li> <li>Long-term costs of healthcare</li> <li>Anti-microbial resistance</li> </ul>

# 3rd Layer - Broader impact on society



Category	Criteria
Innovation	Development of new and substantially improved technologies
	Contribution to development of sustainable/resilient health care
Environmental and social sustainability	Environmental impact
	Re-use of products
	Socially responsible supply chain
Socio-economic impact	Impact of people not in the workforce

# Value-Based Procurement criteria (updated)

Layer	Tier	Category	#	Criteria
Core Layer	Tier 1	Patient Survival Rate	1	Mortality rate
		Degree of Health Achieved	2	Quality of life (physical, emotional, social)
			3	Functionality to perform activities
			4	Morbidity incidence or severity of complications
	Tier 2	Time to Recovery and Return to Normal Activities	5	Early and/or speed of diagnosis
			6	Treatment cycle times
			7	Recovery / rehab time after surgery
			8	Length of stay
		Disutility of the Care or Treatment Process	9	Treatment complications
			10	Wound infections
			11	Hospital-associated infections
	Tier 3	Sustained Health Recovery and Recurrences	12	Re-surgery rate
			13	In-house re-consultation
			14	Re-admission rate
		Long term Consequences of Treatment	15	Treatment side-effects
			16	Revision surgery

Layer	Category	#	Criteria
2nd Layer	Secondary Patient Benefits	17	Patient comfort and pain
		18	Patient flexibility and mobility
		19	Patient satisfaction
	HCP Benefits	20	Safety and occupational risk
		21	Ease of use (handling & functionality)
		22	Training and education
		23	Appealing to use
	Provider Benefits	24	Maintainability, Warranty and Technical Service Support
		25	Supporting Improving Efficiency along Patient Pathway
		26	Staff satisfaction
		27	Workload reduction
28		Strategic fit for Provider and Support of Strategy	
Health System Benefits	29	Long Term Cost of Healthcare	
	30	Re-hospitalisation/Healthcare utilization	
	31	Anti-microbial resistance	
3rd Layer	Innovation	32	Development of new and Improved technology
		33	Contribution to development of sustainable health care
	Environmental and Social Sustainability	34	Environmental Impact (product, packaging, waste)
		35	Re-use and reprocessing of products
		36	Green supply chain
		37	Socially responsible supply chain (Supply chain act)
	Socio-Economic Impact	38	Anti corruption
		39	Impact of people not in the workforce
		40	Welfare of citizens



## DISCLAIMER

The listed award criteria provided herein are non-exhaustive and are solely intended as examples for users, including but not limited to buyers and suppliers. These criteria do not encompass all possible factors that may be considered in evaluating awards or decisions, and their inclusion does not guarantee any specific outcome or result. The information provided should not be construed as legal, financial, or professional advice.

